



Snake Bite Management

*'Always assume that a snake bite is from a
venomous snake'*

*Call Ambulance, dial **000** or **112** (from mobile)*

Information as a guide only not for formal instruction.

By Aida Oakdon and Maricor Tamisen



Snake Bite Management

Things to do

- 1) Rest
- 2) Calm
- 3) Re-assure patient



Snake Bite Management

If unconscious;

- Basic Life Support (see BSL chart)
- **Do not wash** the bitten or stung area.
- **Do not cut or excise** the bitten or stung area.
- **Do not apply an arterial tourniquet.**



Snake Bite Management

If unconscious;

- Basic Life Support (see BSL chart)
- **Do not wash** the bitten or stung area.
- **Do not cut or excise** the bitten or stung area.
- **Do not apply an arterial tourniquet.**



Snake Bite Management

Snake Bite Symptoms

- Puncture or scratch marks from fangs
- Headache
- Abdominal pain, nausea or vomiting
- Blurred or double vision, drooping eyelids
- Difficulty speaking, swallowing or breathing
- Swollen or tender glands in groin or armpit of bitten limb
- Limb weakness or paralysis
- Loss of consciousness



Snake Bite Management

Pressure Immobilisation

Bites to the limbs

Practical Demonstration..

Applying broad bandage and splint



Snake Bite Management

Pressure Immobilisation

Bites to the trunk

Practical Demonstration..

Applying broad bandage and splint



Snake Bite Management

Pressure Immobilisation

- ***Bites to the head or neck***

NO first aid for bitten or stung area.

Keep the patient still and transport to the hospital

Immediately.



Snake Bite Management

Anaphylaxis

- a severe allergic reaction

It can occur in sensitive individuals from exposure to any chemicals foreign to the body, including bites and stings, plants or medication.

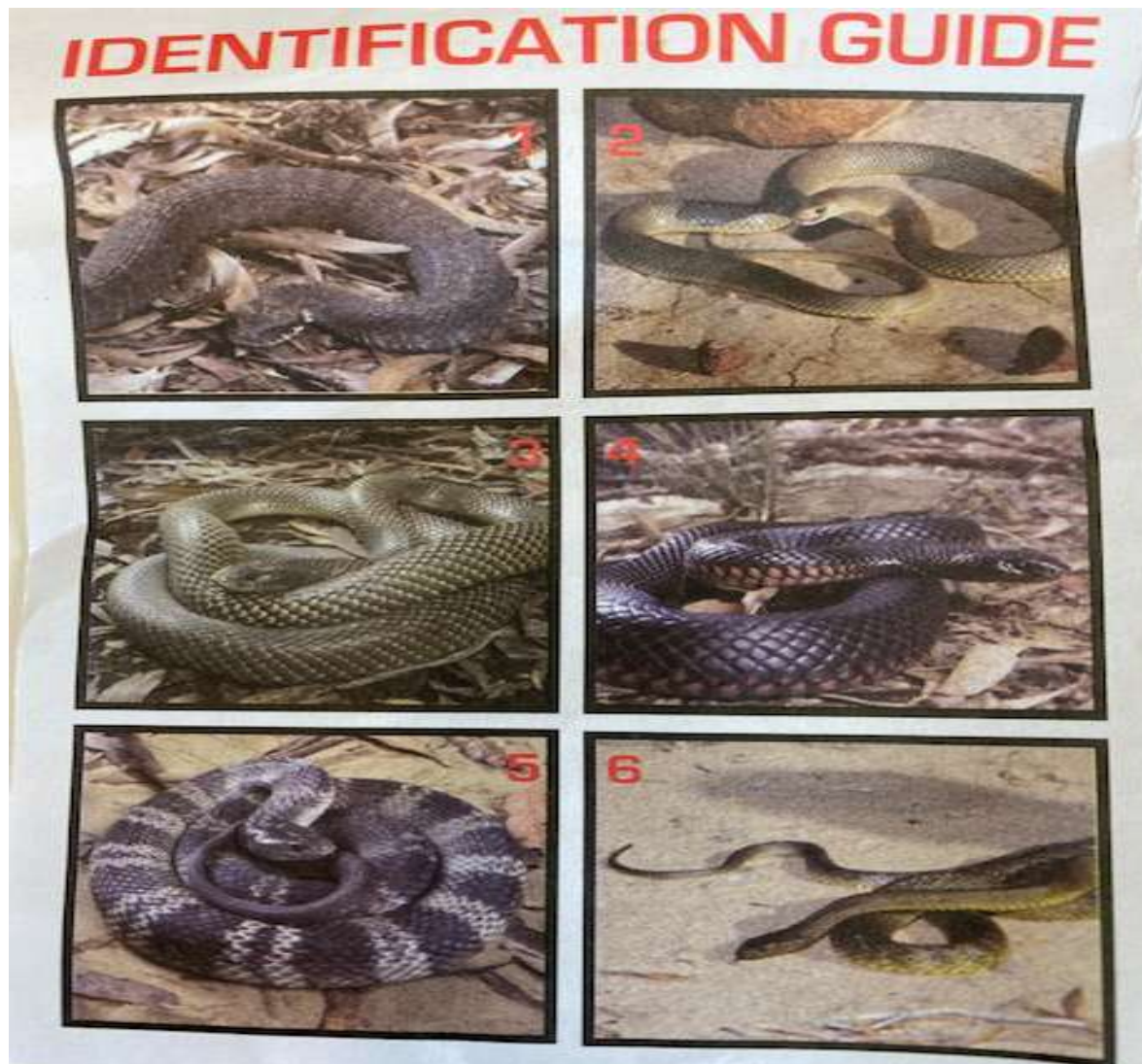
Parts of the body ie; face or throat swell up that the person can not breathe.

In sever cases the person may go into **shock**.

For any person who shows signs of anaphylaxis, call 000 for an ambulance.



Snake Bite Management





Snake Bite Management

- 1) Common Death Adder
- 2) Eastern Brown Snake
- 3) King Brown
- 4) Red-Bellied Black Snake
- 5) Tiger Snake
- 6) Western Taipan

References

- WA / QLD Health Information Centre,
- Australian Venom Research Unit

- Information as a guide only.